

Order Information

MAZIC Claro CAD

Lithium Disilicate Glass Ceramic for CAD/CAM



Product	14	32	
Shade	HT	A1, A2, A3, A3.5, A4, B1, B2, B3, B4, C1, C2, C3, C4, D2, D3, D4, BL1, BL2, BL3, BL4	A1, A2, A3
	LT	A1, A2, A3, A3.5, A4, B1, B2, B3, B4, C1, C2, C3, C4, D2, D3, D4, BL1, BL2, BL3, BL4	A1, A2, A3
	MO	0, 1, 2, 3, 4	-
	Opal	1, 2	-

MAZIC Claro CAD

Lithium Disilicate Glass Ceramic for CAD/CAM



- Various colors
- High flexural strength
- Excellent fracture resistance
- Excellent aesthetics

VERICOM CO., LTD.

Head Office / Factory

48, Toegyegongdan 1-gil, Chuncheon-si, Gangwon-do, Korea

Sales Office / R&D Center

15, Jeonpa-ro 62beon-gil, Manan-gu, Anyang-si, Gyeonggi-do 14086, Korea

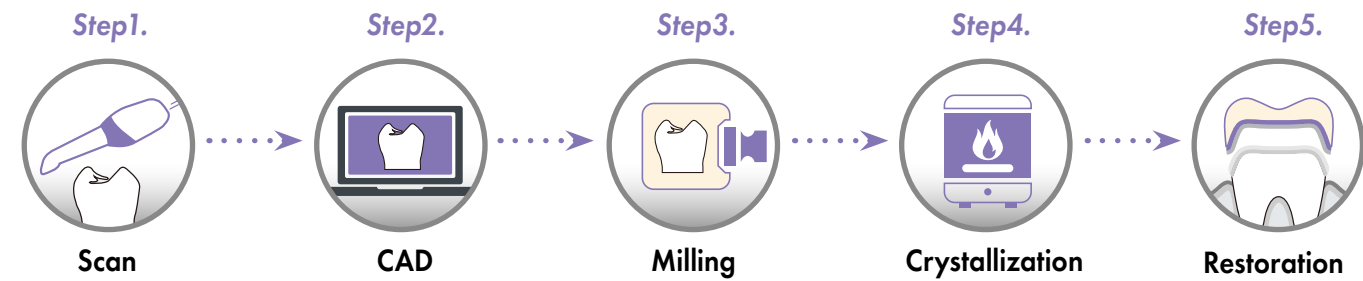
T. +82-31-441-2881 F. +82-31-441-2883 H. www.vericom.co.kr

E-mail vericom@vericom.co.kr / overseas@vericomdental.com



VERICOM

MAZIC Claro CAD 1-DAY Prosthetic Treatment



MAZIC Claro CAD provides exceptional bending and fracture strength, delivering aesthetics similar to natural teeth. Create the aesthetic prosthetics your patients desire with MAZIC Claro CAD.



Step1. Scan Scan the site to be restored using an intraoral scanner.



Step2. CAD Use software to design the tooth for restoration.



Step3. Milling Mill a restoration.

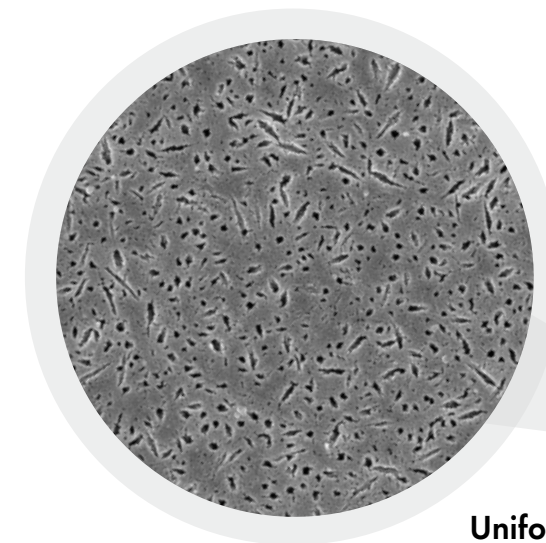


Step4. Crystallization Crystallize the restoration.



Step5. Restoration A natural-looking and aesthetic restoration.

MAZIC Claro CAD Product Features



MAZIC Claro CAD uses uniform micro-crystallization techniques to form nuclei evenly on the inner side of the block, resulting in high strength and hardness suitable for long-term restoration. In addition, it has excellent accuracy and efficiency in processing. Thus, there is no chipping. It has the advantages of reduced processing time and consumption of dental burs.



Uniform crystal structure



1-Day Prosthetic Treatment

Prosthetic treatment, from scanning to design, milling, crystallization, and restoration, can be completed in just one hour with a simple post-process followed by milling.



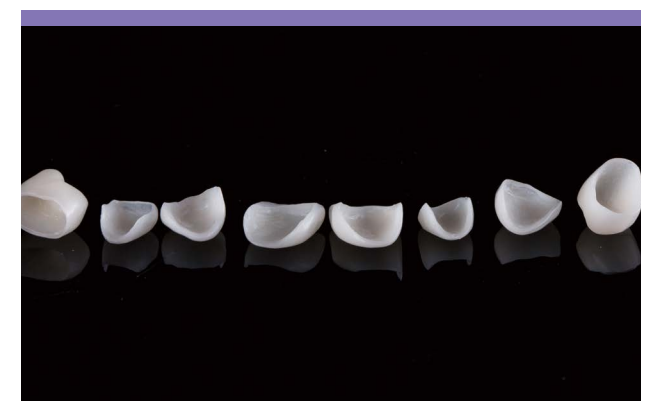
Natural Tooth-Like Aesthetics

Experience a variety of shades, including transparency and opacity. Perform build-up, stain, and gazing work, enabling you to express natural-like aesthetics in various ways depending on the case.



Fluorescence

Compared to zirconia prosthetics with no fluorescence, MAZIC Caro CAD has the same fluorescence as natural teeth, which is suitable for aesthetic prosthetics.

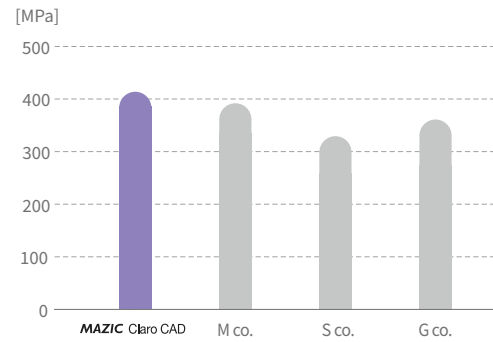


Various indications

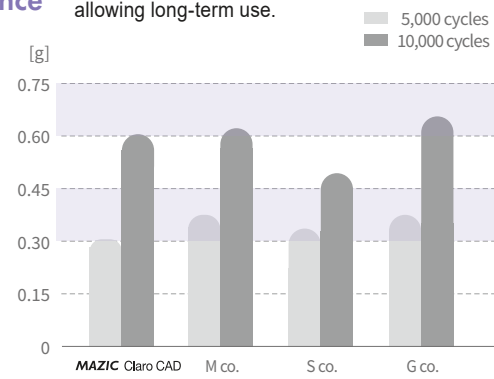
It is designed for a variety of uses, from very thin veneers to inlays, onlays, and posterior single crowns.

Excellent Physical Properties

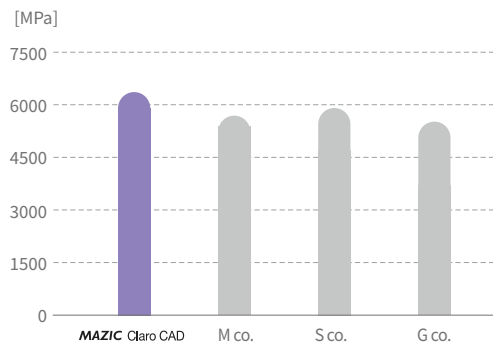
Flexural strength The higher the flexural strength, the higher the resistance to fracture, allowing long-term use.



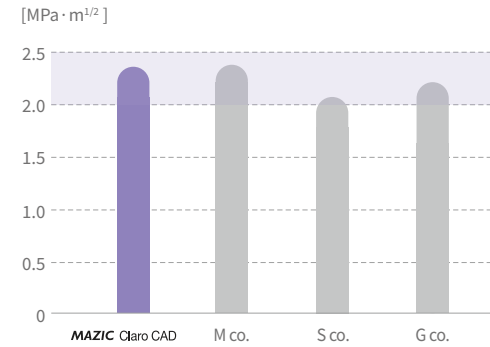
Wear resistance The higher the abrasion resistance, the higher the resistance of surface abrasion caused by food, toothpaste, etc., allowing long-term use.



Surface hardness The higher the surface hardness, the higher the resistance to microabrasion.



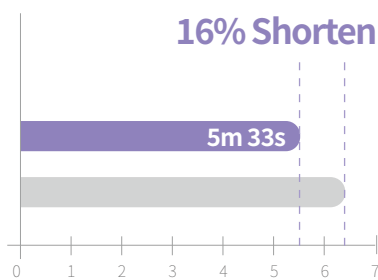
Fracture strength The increase in fracture strength lowers the fracture risk due to shock.



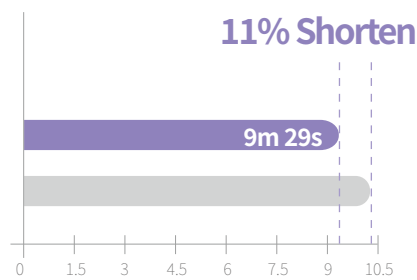
Fast processing speed of MAZIC Claro CAD

MAZIC Claro CAD Company M

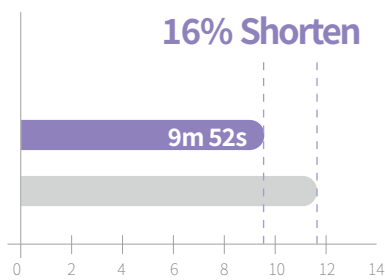
• Inlay



• Coping Crown

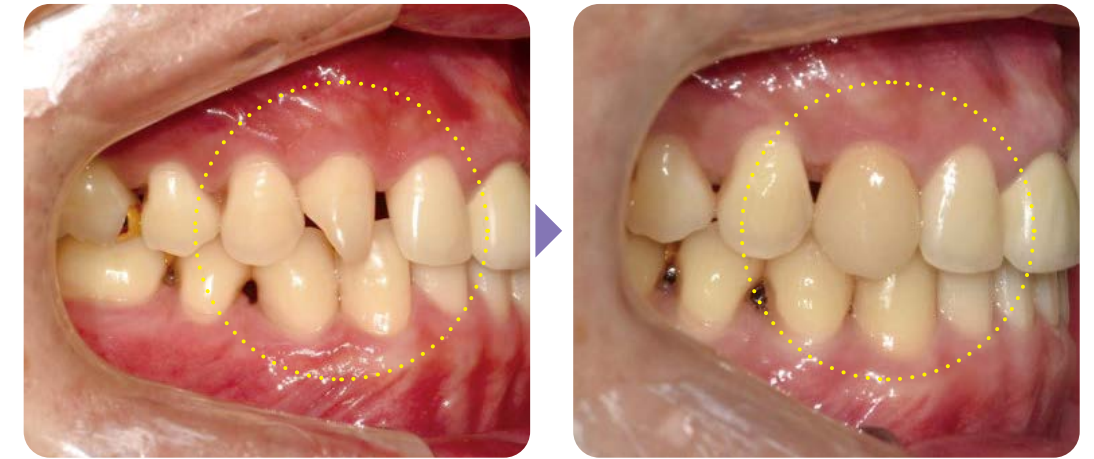


• Veneer



MAZIC Claro CAD Clinical Case Follow Up

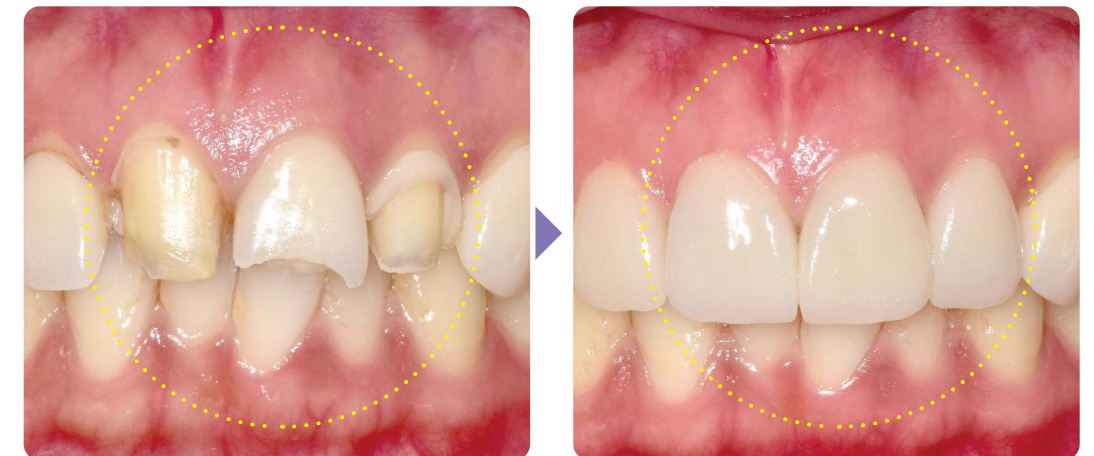
CASE 01
Laminate



CASE 02
Laminate



CASE 03
Laminate

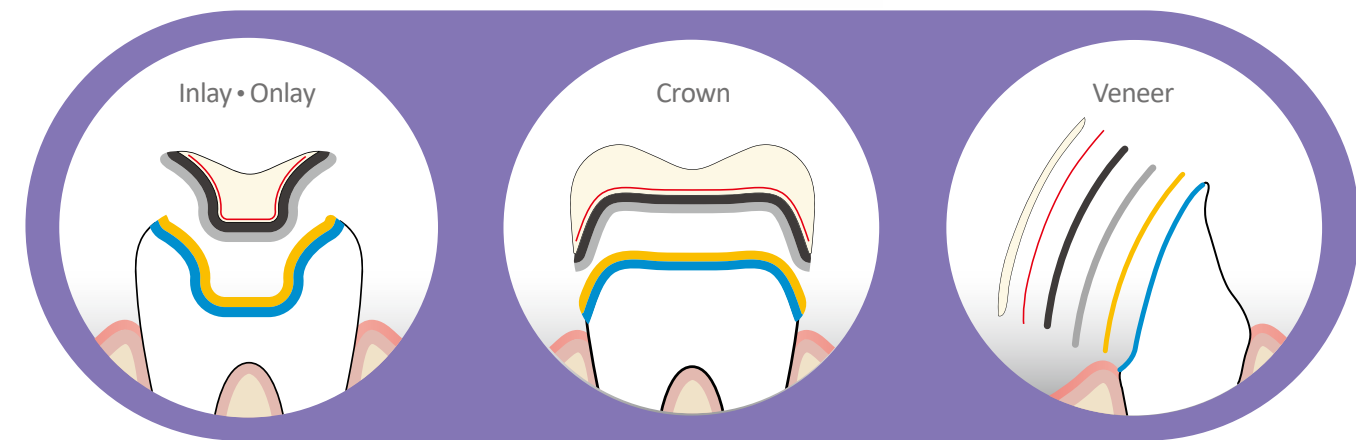


*Clinical Case by Dr. Seo Song-hee, DT Jang Jae-hyuk (Dangsan One Dental Clinic)

MAZIC Claro CAD Prosthesis Solution

Strong adhesive system

The combination of MAZIC Primer, U-Cem Premium, and bonding agent (BC plus 5th generation & U-Bond 7th generation) provides a perfect cementation system for high-quality bonding strength and stability.



- Ceramic
- 5% HF
- Pretreatment Agent
- Resin Cement
- Bonding Agent
- Etching Agent

Optional

U-Cem Premium is a dual-curing self-adhesive resin cement that bonds to teeth without etching. Thus, these products are optional.



MAZIC Claro CAD User Guide

MAZIC Claro CAD Crystallization Schedule

Entry Temp. (°C)	Closing Time (min.)	Heating Rate t ₁ (°C/min.)	Final Temp T ₁ (°C)	Holding Time. H ₁ (min.)	Heating Rate t ₂ (°C/min.)	Final Temp T ₂ (°C)	Holding Time. H ₂ (min.)	Vacuum 1 1 ₁ (°C) 1 ₂ (°C)	Vacuum 2 2 ₁ (°C) 2 ₂ (°C)
400	06:00	90	820	00:10	30	840	07:00	550 820	820 840

